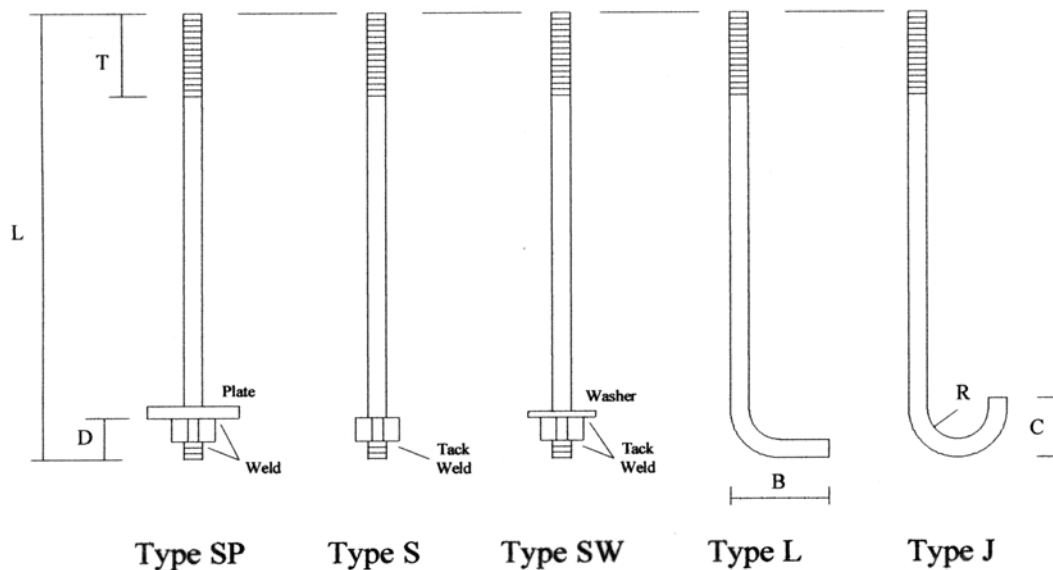


Anchor Bolts

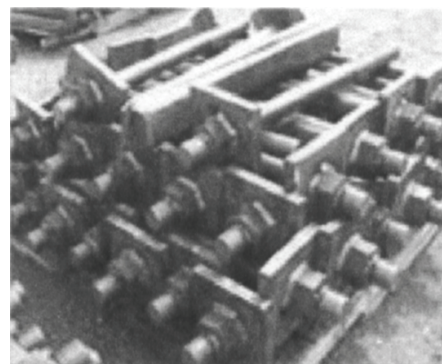
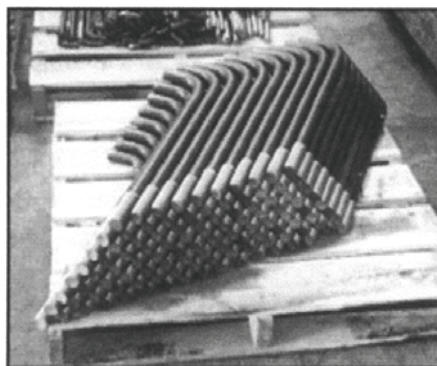
Custom Anchor Bolts

Made to Order at Construction Anchors, Inc.



Construction Anchors has the ability to provide custom shape anchor bolts cut, threaded and bent to your exact specifications. We can in-house fabricate anchor bolts from 5/8" to 1/2" diameters.

Being a small company, Construction Anchors can react to your needs and delivery schedules for fast track projects.



Division 5

Wilson Anchor Bolt Sleeves



Wilson Anchor Bolt Sleeves are used as an in-place form to provide a grout pocket around anchor bolts. Manufactured from high impact plastic, they are non-rusting, non-conductive and lightweight.

For bolt diameters 1/2" thru 3".