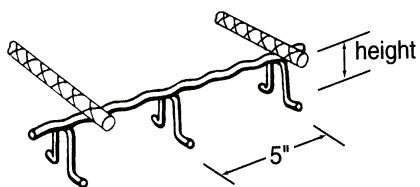
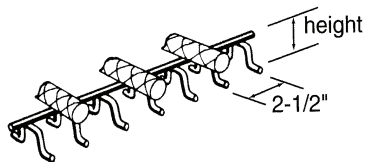


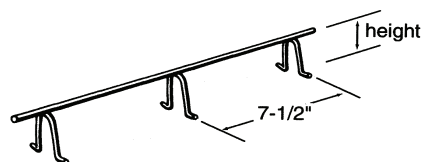
Bar Supports



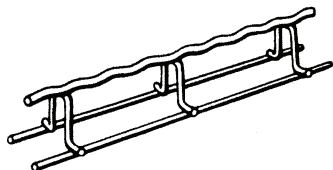
SB – Slab Bolster



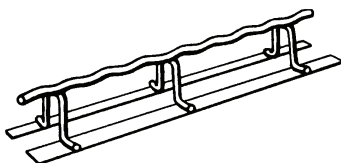
BB – Beam Bolster



CNC – Continuous High Chair



SBU – Slab Bolster Upper



SBP – Slab Bolster with Plate

CHCU – Cont. High Chair Upper

CHCP – Continuous High Chair with Plate

BBU – Beam Bolster Upper

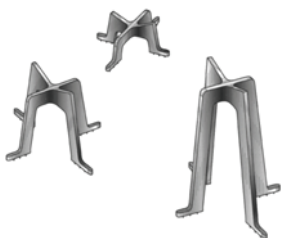
BBP – Beam Bolster with Plate

Available In:

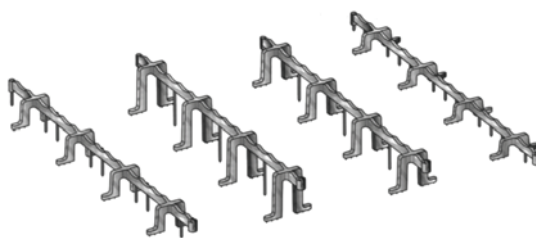
- Bright Basic
- Plastic Protected Legs
- Epoxy Coated
- Stainless Steel
- Galvanized

Division 3

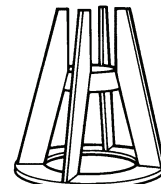
All Plastic



Composite Chairs
1/2" – 10-1/4"

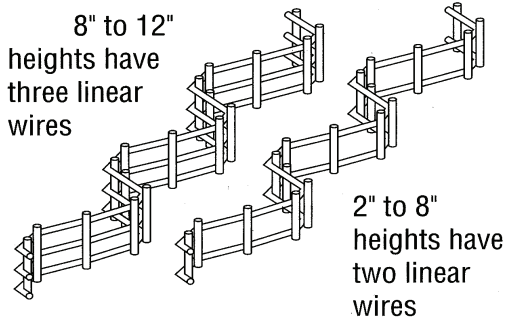


Composite Slab Bolsters
3/4" – 4"



Intersectional Chairs

Zig Zag



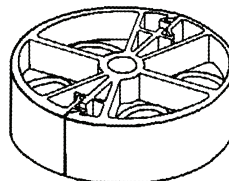
Ideal For Mesh

Zig Zag is an 8 ft. wire mesh strip bent into a "zig zag" pattern that is 6' 8" long by 8" wide. It is available in 2" to 12" heights in 1/2" increments. The wire gauge ranges from 4 ga. to 8 ga., depending on the height and the customer's strength requirements. All heights are shipped as 6' 8" lengths, and will support approximately 32 sq. ft. of mesh when properly installed.

SHAFTSPACER™

A guide and alignment system for bar reinforcement positioning within caissons, drilled shafts and other geotechnical construction applications.

SHAFTSPACER™ is currently available in four models.



Clearance Requirements

- SS505 for 2.5"
- SS406 for 3"
- SS808 for 4"
- SS612 for 6"