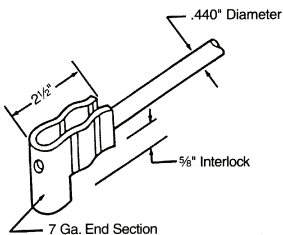
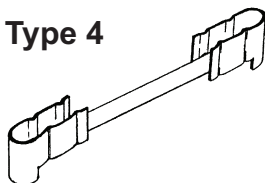


Concrete Bridge Forming



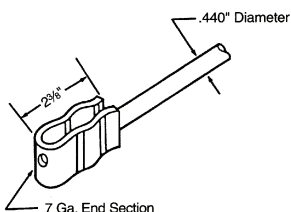
C-60 Pres-Steel Hangers

Type 4

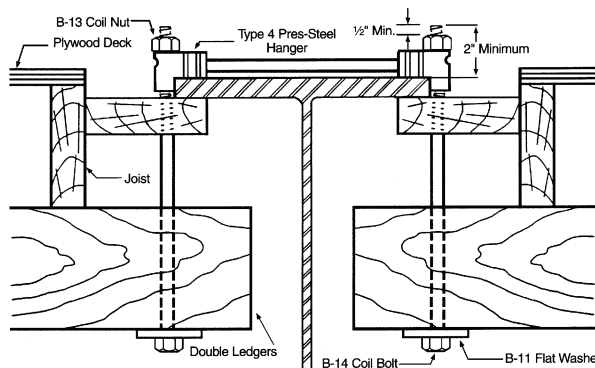


Type 4 Leg Detail

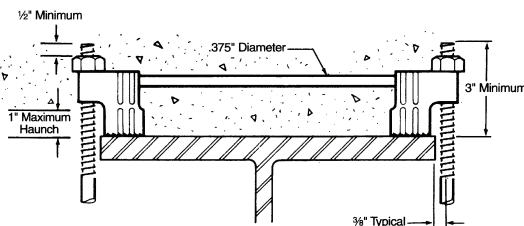
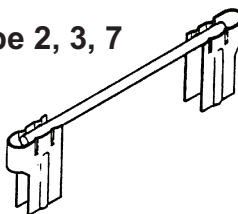
**Safe Working Load
6000 lbs. per Side**



Type 5 Leg Detail

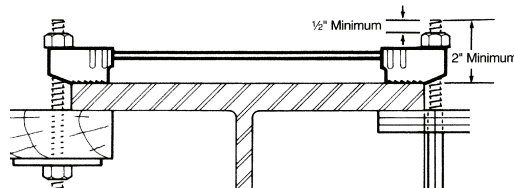
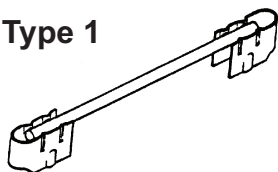


Type 2, 3, 7



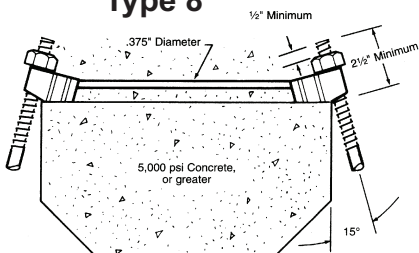
Type	Safe Working Load per Side	Maximum Haunch
2	2375 lbs.	1"
3	2500 lbs.	2-1/2"
7	2375 lbs.	1-1/2"

Type 1



**Safe Working Load
3500 lbs. per Side**

Type 8



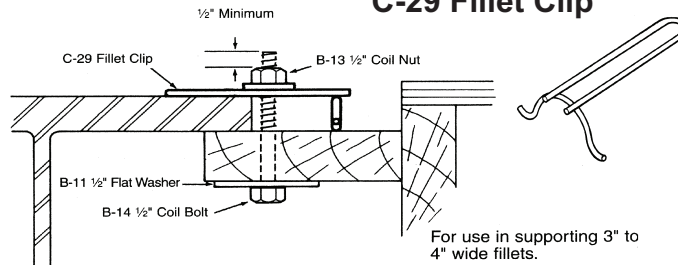
**Safe Working Load
Standard – 4500 lbs.
Heavy – 6000 lbs.**

HANGERS

SWL provides a safety factor of approximately 2:1.

Warning: Hangers must be equally loaded on both sides.

C-29 Fillet Clip



For use in supporting 3" to 4" wide fillets.

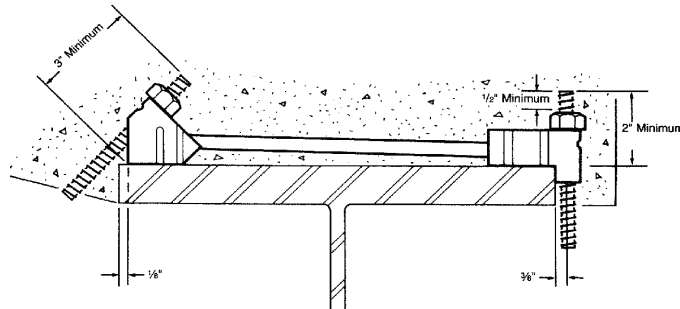
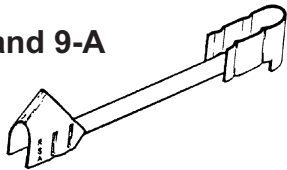
Division 3

Concrete Bridge Forming



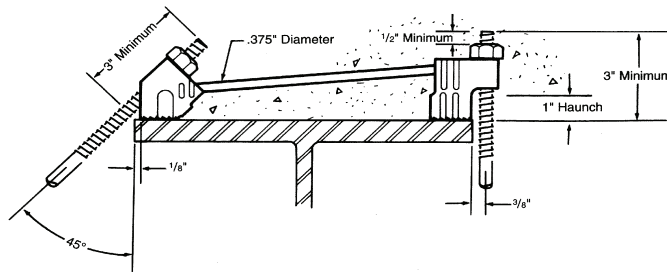
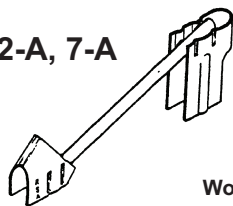
C-60 45° Pres-Steel Hangers

Type 4-A, 5-A and 9-A



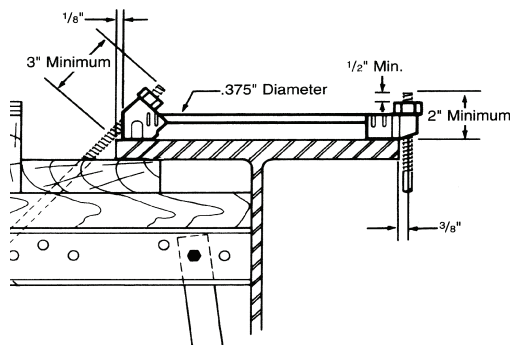
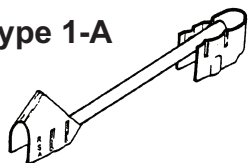
Type	SWL	Bolt Diameter	
		45° End	90° End
4-A	6000 lbs. per Side	1/2"	1/2"
5-A	6000 lbs. per Side	3/4"	1/2"
9-A	11,300 lbs. per Side	3/4"	3/4"

Type 2-A, 7-A



Type	Safe Working Load per Side	Maximum Haunch
2-A	2375 lbs.	1"
7-A	2375 lbs.	1-1/2"

Type 1-A



Safe Working Load
3500 lbs. per Side

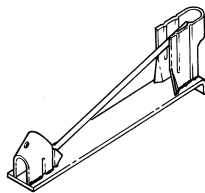
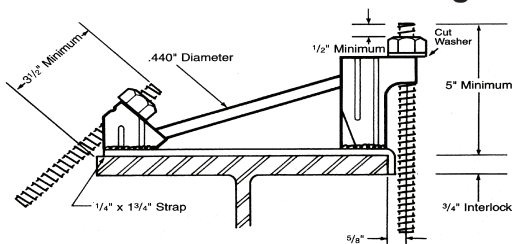
HANGERS

SWL provides a safety factor of approximately 2:1.

Type 1-A, 2-A, 7-A, 8-A

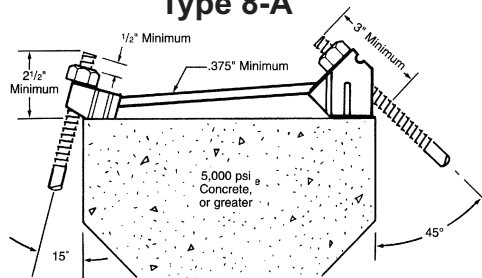
Warning: It is recommended that this hanger be used to support overhang brackets only when the weight of concrete finishing machines and/or conveyor machines is supported directly on the bridge exterior beam.

C-62 45° Pres-Steel Hanger



Safe Working Load
4000 lbs. on 45° Side
2800 lbs. on 90° Side

Type 8-A



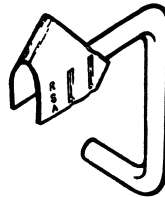
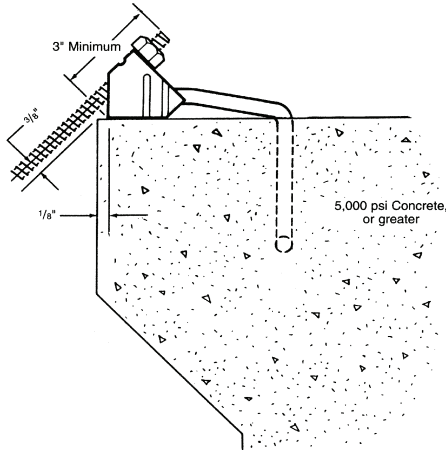
Safe Working Load
4500 lbs. per Side

Division 3

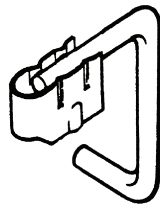
Concrete Bridge Forming



C-24 Precast Half Hangers



C-24 45°



C-24 90°

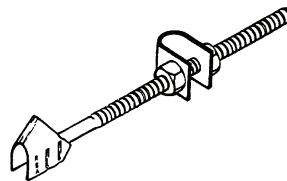
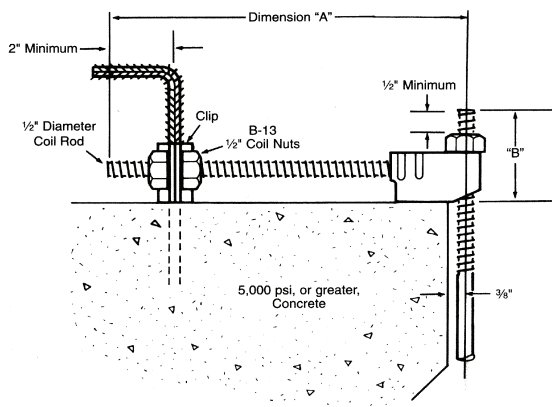
C-24 Selection Chart

Hanger Type	Safe Working Load
45°	
4-AP	3300 lbs.
4-APR	6000 lbs.
90°	
1-PR	3000 lbs.
4-PR	6000 lbs.

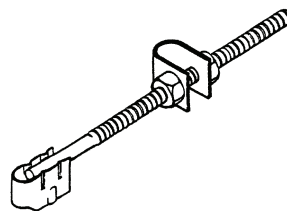
SWL provides a safety factor of approximately 2:1

Division 3

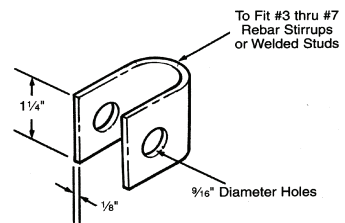
C-25 Adjustable Half Hangers



C-25 45°



C-25 90°

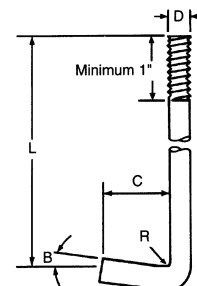
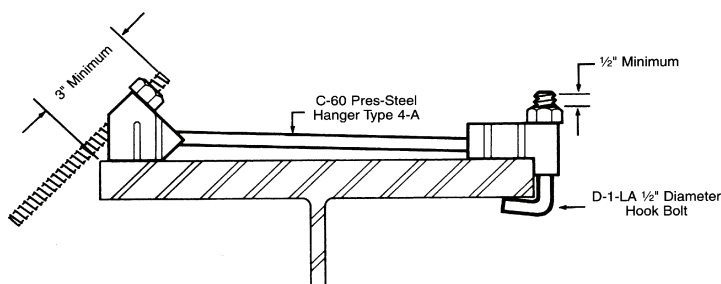


Clip Detail

Safe Working Load
1100 lbs. with One Clip
3000 lbs. with Two Clips

SWL provides a safety factor of approximately 2:1

D-1-LA Hook Bolt



Note: Recommended dimensions when used with Type 4-A Pres-Steel Hangers: L = As Required; C = 1-1/2"; T = 2"; R = 1/4" and B = 5° maximum.

TOLL FREE 800-892-7224
800-821-7735

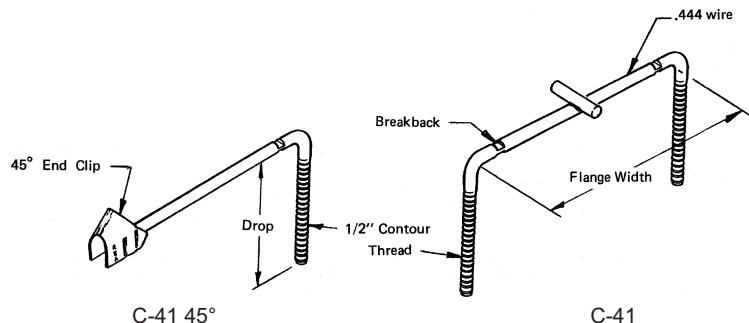


LOCAL 816-525-3640
FAX 816-525-4533

Concrete Bridge Forming



C-41 Coil Rod Hangers

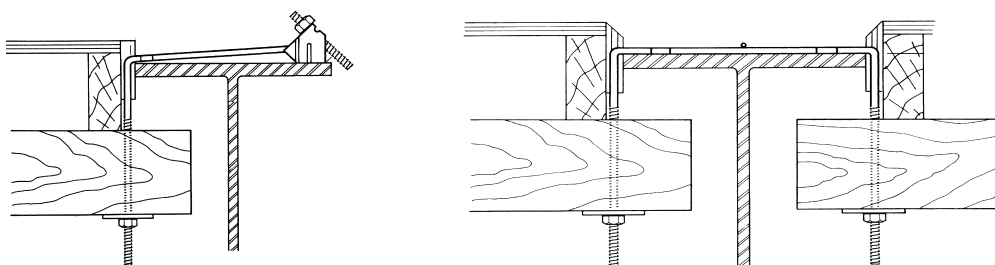


Safe Working Load
4500 lbs. per Side

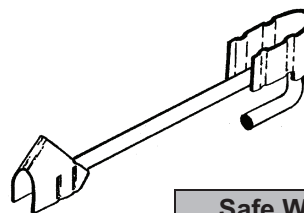
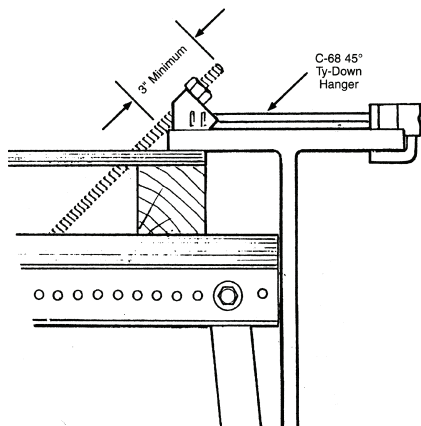
SWL provides a safety factor of approximately 2:1.

When ordering, specify flange width, drop and thread length.

Note: Hanger is fabricated 1/2" wider than flange width specified.



C-68 45° Ty-Down Hanger

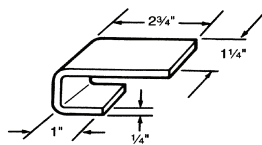
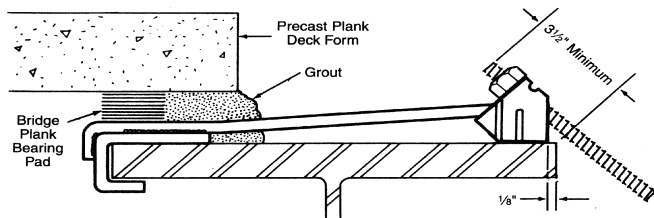


Safe Working Load
6000 lbs. per Side

SWL provides a safety factor of approximately 2:1.

When ordering, specify flange width and thickness.

C-63 45° Pres-Steel Hook Hanger



C-63 Pres-Steel Hanger Selection Chart

Type	Safe Working Load	Bolt Diameter
4-AB	5000 lbs.	1/2"
5-AB	5000 lbs.	3/4"

SWL provides a safety factor of approximately 2:1.

When ordering, specify flange width and thickness.

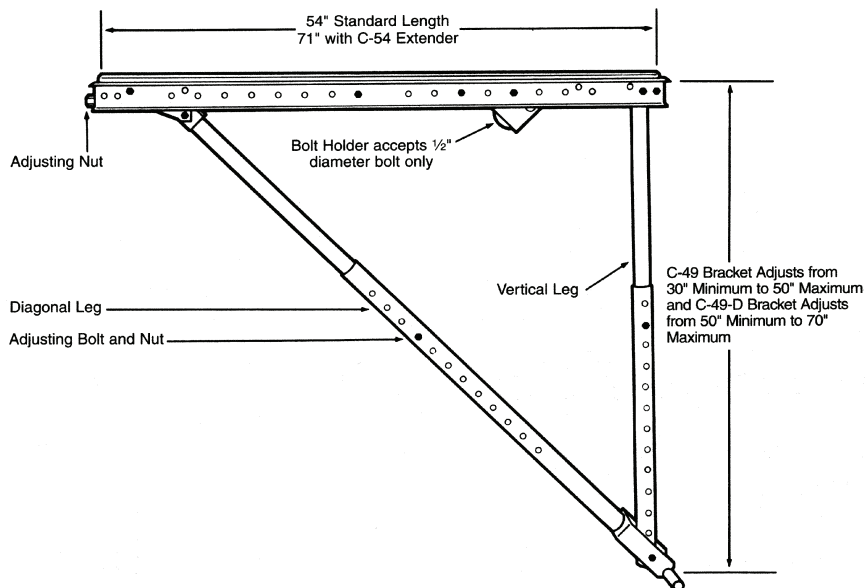
Division 3

Concrete Bridge Forming

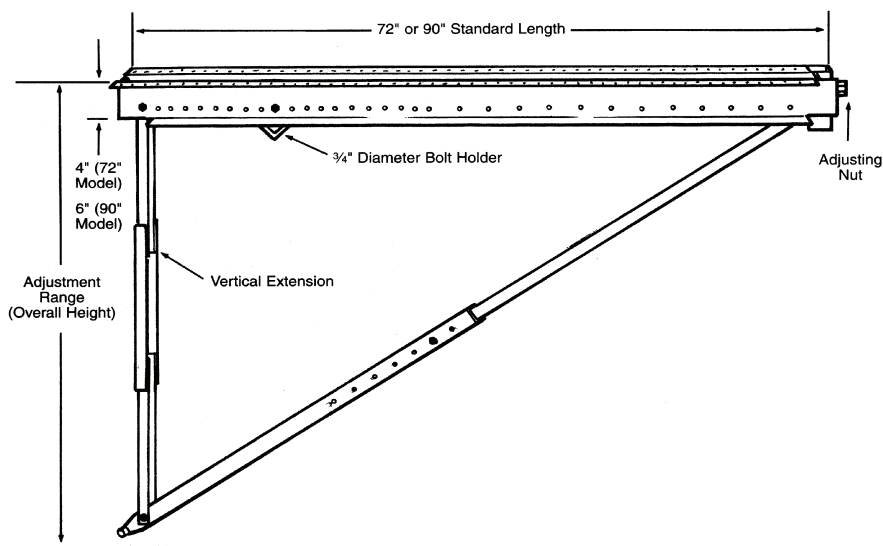


C-49 and C-49-D Bridge Overhang Brackets

Dayton/Richmond Bridge Overhang Brackets are designed with maximum adjustability to meet the varied overhang-forming requirements on structural steel and precast/prestressed concrete beams. The C-49 and C-49-D Bridge Overhang Brackets accommodate an adjustment range of 30" to 70" and can be mounted to steel beams, precast concrete beams and concrete box beams with the appropriate hanger devices. Both of the bracket models can be easily and quickly pre-set on the ground and then set in place as needed.



C-89 and C-89-L Heavy-Duty Bridge Overhang Brackets



Dayton/Richmond C-89 and C-89-L Heavy-Duty Bridge Overhang Brackets are designed for maximum adjustment and strength to meet the rigors of heavy cantilever/overhang applications. The C-89 bracket features 72" long, four-inch horizontal channels and an overall vertical adjustment range of 27-5/8" to 66-3/4". The C-89-L bracket has 90" long, six-inch horizontal channels and an overall vertical adjustment range of 29-5/8" to 68-3/4".

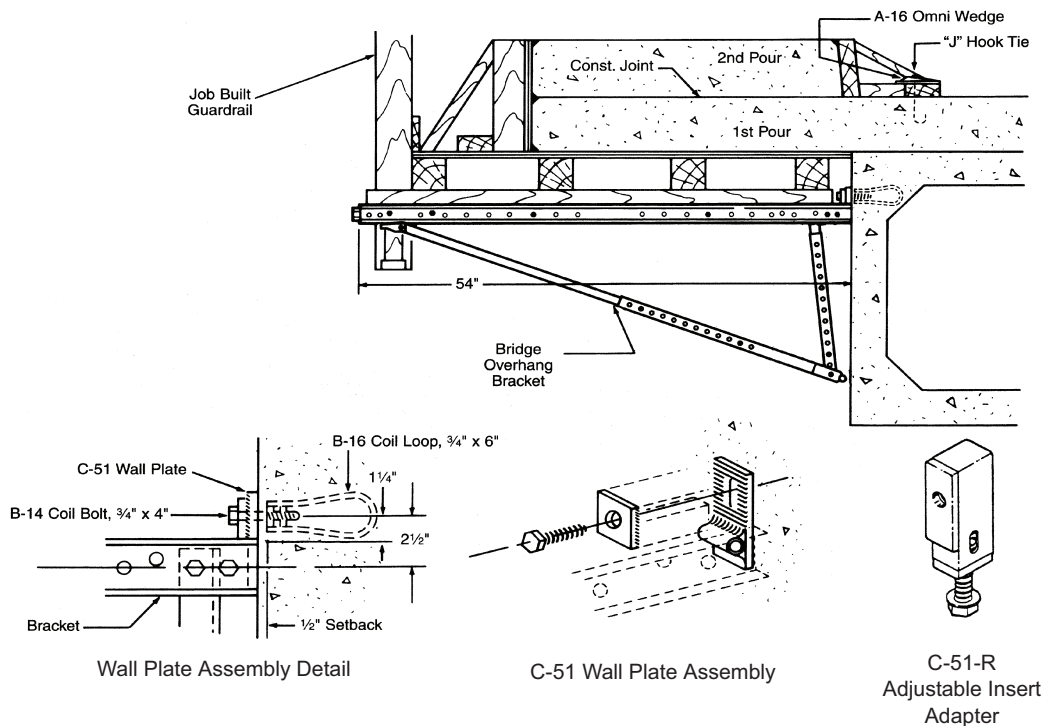
Both brackets come equipped with nail holes in the top of the horizontal channels for attaching 2x6 or 2x8 lumber (flat), and both brackets have built-in guardrail receptacles for 2x4 guardrail posts.

The C-89 and C-89-L brackets can be used equally well on steel or precast concrete bridge girders with the appropriate 3/4" C-60 45° Pres-Steel Hanger (Type 9-A). The brackets can be shipped "knocked down" for easier handling and shipping, and then preset on the ground at the job site.

Concrete Bridge Forming

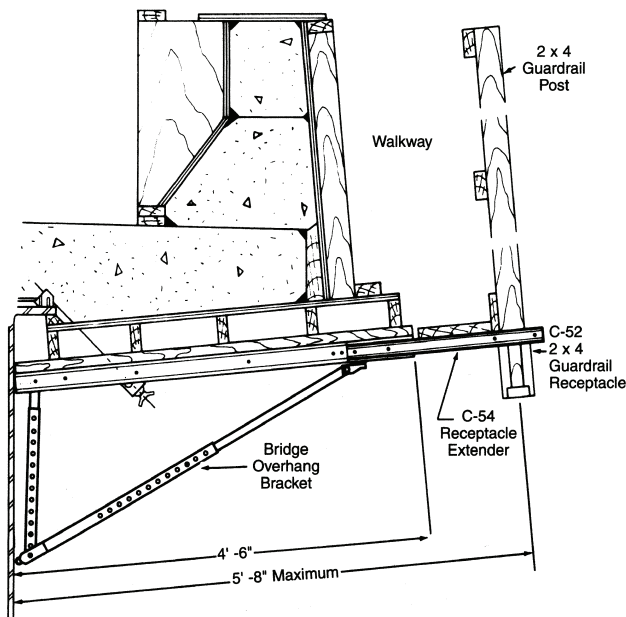


C-51 Wall Plate Assembly and C-51-R Adjustable Insert Adapter



Division 3

The C-51 Wall Plate Assembly and C-51-R Adjustable Insert Adapter are used to mount a C-49 Overhang Bracket directly to a 3/4" diameter insert cast in a precast/prestressed concrete box girder.



C-54 Bridge Overhang Bracket Extender

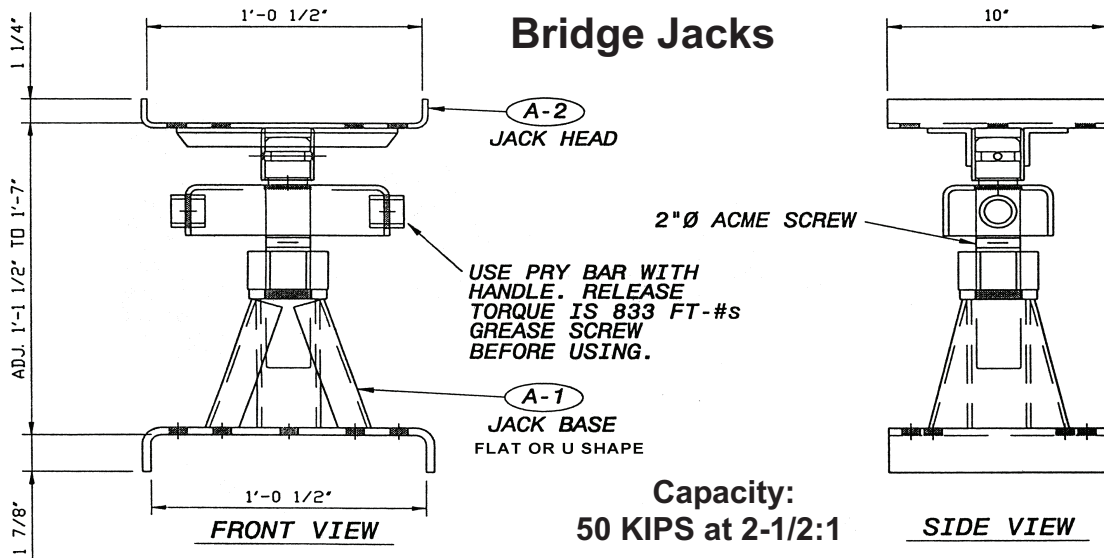
The C-54 Bridge Overhang Bracket Extender attaches to the end of the C-49 or C-49-D bracket's horizontal member to extend the usable working surface of the bracket. When used to support a walkway, each overhang bracket is required to have an extender.

C-52 and C-53 Guardrail Receptacles

The C-52 and C-53 Guardrail Receptacles are designed to facilitate placement of guardrail posts on the exterior formwork. The C-52 receptacle bolts securely to the C-54 Bridge Overhang Bracket Extender and accepts 2x4 guardrail posts. The C-53 receptacle attaches to the flat 2x6 which is nailed to the channels of the overhang bracket, and accepts 2x6 guardrail posts.

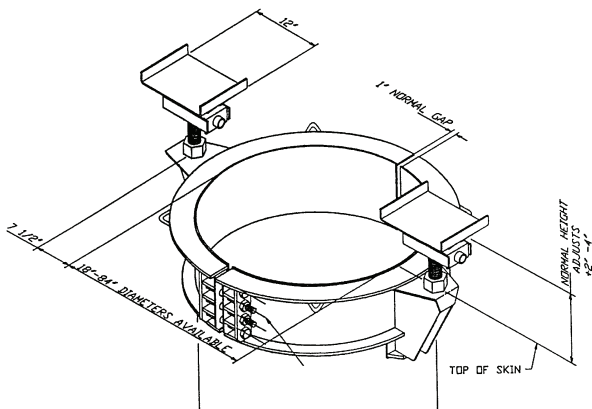
Concrete Bridge Forming

Bridge Jacks



Division 3

Friction Collars



Friction Collar Models

Capacity Per Screw	18k	27k	36k	54k	72k	108k	144k
Diameter of Screw	1-1/2	1-3/4	2	2-1/4	2-1/2	3	3-1/2
Tension Bolt Diameter	7/8	7/8	7/8	1-1/4	1-1/4	1-1/4	1-1/4
Qty. of Tension Bolts	4	6	8	6	8	12	16
Normal Height For Head	7-1/2	8	8-1/2	9	10	11	13

- All capacities have 3:1 safety factor to ultimate strength.
- The friction collar should be field tested to 1-1/2 times the maximum intended load for each job.
- Both sides of the friction collar must be loaded equally.

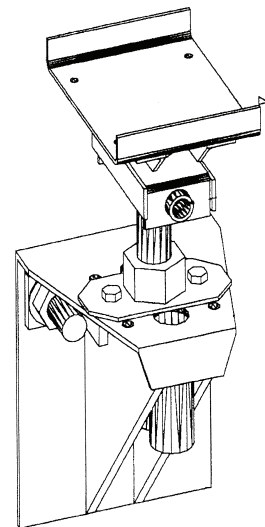
Bracket Jacks

Bracket Jack Models

Capacity Per Screw	20k	30k	45k	60k	80k	105k	125k
Diameter of Screw	1-1/2	1-3/4	2	2-1/4	2-1/2	3	3
Thru-Bolt Diameter	1	1-1/4	1-1/2	1-3/4	2	2-1/4	2-1/2
Torque Thru-Bolt Ft.-Lbs.	260	450	780	1400	2100	2900	3900
Thru-Bolt Centers	7"	8"	9"	10"	11"	12-1/4"	13-1/2"
Set Back From Wall	4-1/2, 7-1/2, 10-1/2	4-1/2, 7-1/2, 10-1/2	4-1/2, 7-1/2, 10-1/2	4-1/2, 7-1/2, 10-1/2	4-1/2, 7-1/2, 10-1/2	7-1/2, 10-1/2	7-1/2, 10-1/2
Height Adjustment Ft.*	7 to 13	8 to 14	9-1/2 to 15-1/2	11 to 17	12 to 18	14 to 20	14 to 20

* Center of thru bolt to top of jack.

All capacities have 3:1 safety factor to ultimate strength.



TOLL FREE 800-892-7224
800-821-7735

ca construction
anchors, inc.

LOCAL 816-525-3640
FAX 816-525-4533