

Concrete Detectable Warning Tiles

Armor-Tile Tactile Systems

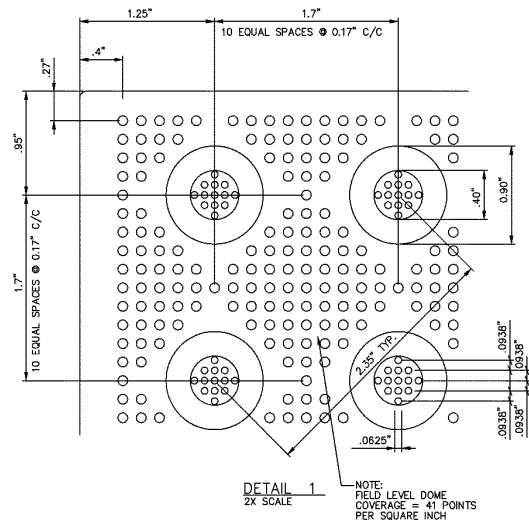
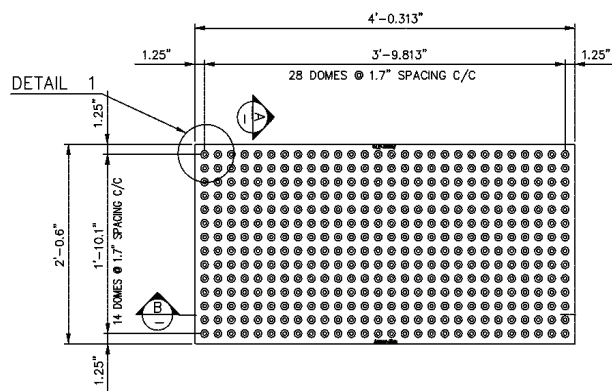
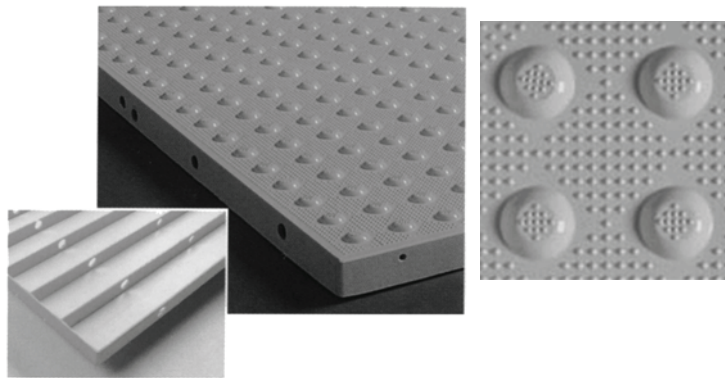
5 types of models to choose from in a variety of sizes and colors:

- **CAST-IN-PLACE TILES**
This unique patented system allows tiles to be set directly in new concrete for substantial time and cost savings.
- **SURFACE APPLIED TILES**
The solution of choice for facilities needing to upgrade for the visually impaired.
- **MODULAR PAVERS**
Tiles are filled with concrete and laid as regular paving stones.
- **DETECTABLE DIRECTIONAL TILES**
Bar tiles create a tactile induction line to assist the visually impaired in finding their way to destinations.
- **DETECTABLE GUIDANCE STRIPS**
For guiding the visually impaired across roadways, such as at multi-modal transit centers and pedestrian crossings at intersections.

Cast In Place System

Only Armor-Tile offers the cost effective option of setting detectable warning tiles directly in newly poured concrete.

- Unique patented system available only from Armor-Tile.
- Installed for a fraction of the cost of surface applied tiles.
- Tiles are set seamlessly into newly poured concrete.
- No glue, no screws, no caulking.
- No costly preparation of the concrete surface.
- Set by concrete pourers with negligible labor cost and time.
- Standard sizes – 12" x 12", 24" x 24", 24" x 36", 24" x 48", 24" x 60", 36" x 48" (other sizes available).



Detectable Warning Tiles

Armor-Tile is the world leader in detectable warning systems.

Manufactured of diamond-hard vitrified polymer, Armor-Tile truncated dome tiles are the industry standard for durability, weather resistance and wear resistance.

The world's largest selection of detectable warning products for:

- Curb Ramps
- Vehicular Ways
- Parking Areas
- Stairwells
- Pedestrian Crossings
- Escalator Approaches
- Transit Platforms
- Multi-Modal Transit

Division 3